

## **Operating instruction**

### **SWITCH Pager DSE 408**

For your own safety. Please read these prior to putting the pager into operation!



## **Introduction**

Esteemed customer

This SwitchPager is destined exclusively for private use. As in the case of all electrical devices, here too special care is called for, in order to avoid injury, fire damage or damage to the device itself.

Please study these operating instructions prior to putting the device into operation and observe the safety information provided.

## **Utilization of these Operating Instructions**

These operating instructions cannot take into consideration every conceivable use. For further information or in case of problems, which are not - or not sufficiently comprehensively dealt with, please contact your specialist distributor.

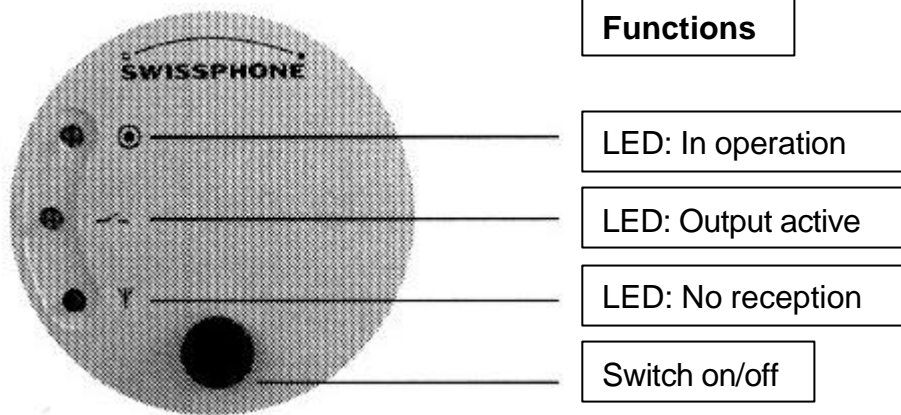
Please keep these operating instructions carefully and if necessary pass them on to possible subsequent users.

## **Unpacking**

The SwitchPager is ready for operation.  
Please dispose of the packing material appropriately.

## Description

With the SwitchPager you can switch ON or - OFF every electronic appliance with a 230 V and max. 10 A mains connection. With the push-button located on the front side, the appliance can be manually switched ON or OFF.



## Putting into Operation and Operating

1. You will find the call number of your SwitchPager as well as your personal PIN code on the back of the SwitchPager. Please make a note of both these numbers and keep them.
2. Plug the SwitchPager into the mains socket. Two LEDs briefly light up. The green LED remains lit and thus indicates, that the SwitchPager is in operation.
3. Now plug the appliance to be switched into the socket of the SwitchPager.
4. From a telephone or Natel, dial the call number of Paging Central **0900 10 40 55**  
Wait for the text of the taped message.  
Dial the call number of your SwitchPager and press #  
Wait for the Text of the taped message  
Dial the four numbers of your PIN code followed by the number for the switching command.

## Switching Command Numbers

- |   |             |
|---|-------------|
| 1 | ON          |
| 0 | OFF         |
| 2 | Briefly ON  |
| 8 | Briefly OFF |

Finish with the # - key and then hang up.

The switching operation has now been completed.

The appliance can also be switched ON or OFF manually with the push-button.

The duration of the "Brief ON / Brief OFF command" amounts to approx. 45 seconds.

### Example:

Call number of the SwitchPager: 48 112 86

PIN code 1234

You would like to switch on an appliance connected to the SwitchPager.

- Pager Central **0900 10 40 55**

- Wait for the Text message

- Input 4 811 865#

- Wait for the Text message

- Input 1234 1#

- Hang up.

### Safety Prescriptions

#### Danger!

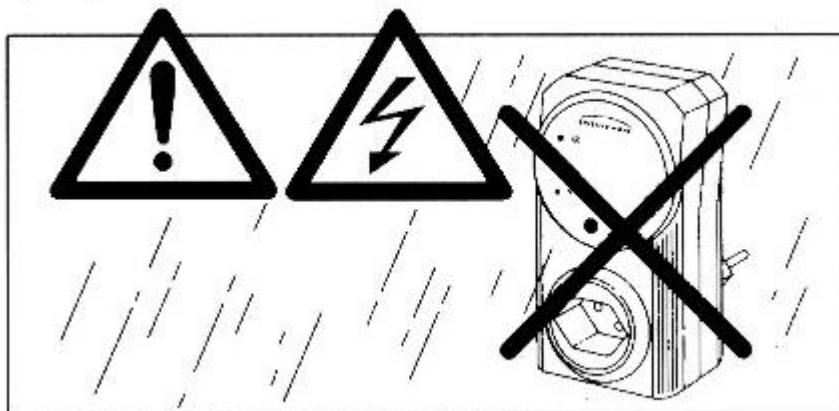
Electricity can kill!

Never let the SwitchPager come into contact with water or with other liquids:

Danger of a short-circuit!

Non-authorized operators:

Persons, who are not familiar with the operating instructions, children as well as persons under the influence of alcohol or medicines must not operate the SwitchPager or must only operate it under (appropriate) supervision.



## Electric Power Supply

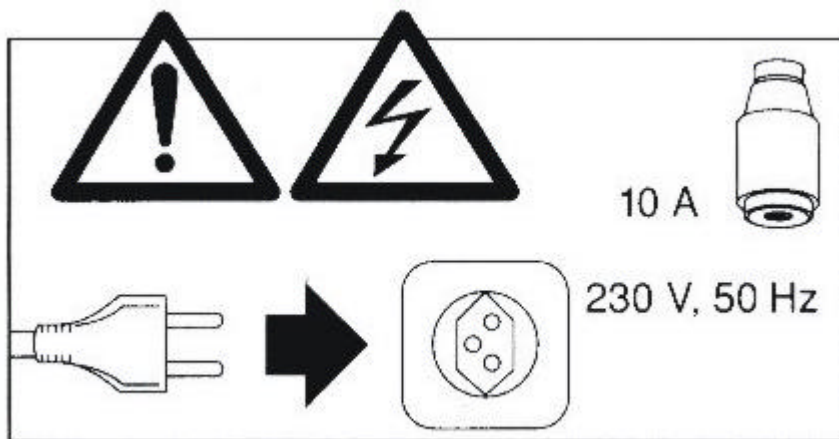
Only connect the SwitchPager to alternating current with a voltage of 230 V / 50 Hz. Minimum fuse protection of the electric power socket 10 Ampere. In damp rooms, use only power sockets with a leakage - / fault current circuit breaker. The nominal triggering current must amount to 30 mA maximum.

### Power failure

By Power failure > 1 sec. The SwitchPager goes in OFF position.

### Legal requirements

Since 1985, for new installations and in case of any changes to existing installations, the power sockets in rooms with bath - and showering installations have to be equipped with a leakage - / fault current circuit breaker.



## Protection of Other People

Pay attention, that children have no possibility of playing with the SwitchPager. Children do not recognize the dangers, which can arise in connection with electrical devices and appliances.



## Other Provisions

- The user has the responsibility, that devices connected to the remote switch do not cause any damage.
- The user is responsible, that in the case of a failure or malfunction of the remote switch no damage to property occurs.
- It is not permitted to connect electrical devices, which must only be operated under supervision.

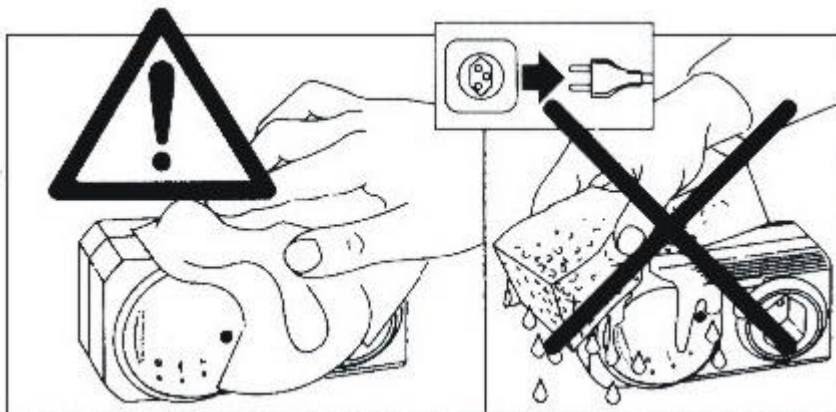
## Application

Never put the SwitchPager into operation, if its housing is damaged.

## Cleaning

Never immerse the device in water or in other liquids or let it come into contact with these substances! Do not penetrate into the device with any other objects.

If necessary, the device can be rubbed down with a dry, non-fluffy cloth.



## Storage

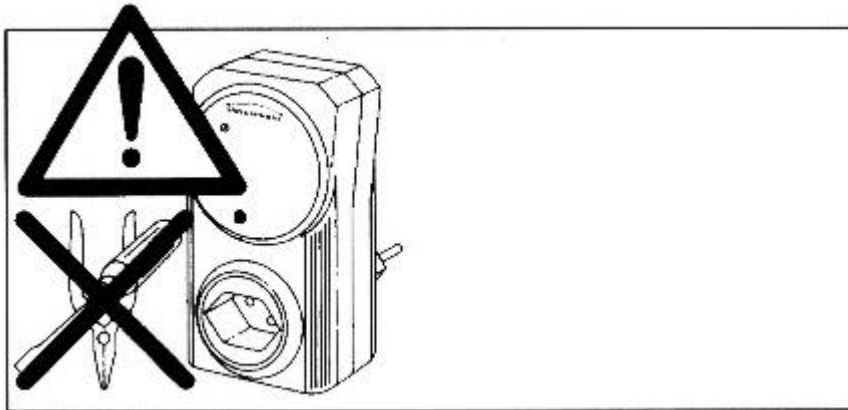
Store the device outside the reach of children. If the device is not used for a longer period of time, it should be protected from excessive dust or dirt.

## Maintenance

Apart from an occasional functional check, the SwitchPager requires no maintenance.

## Repairs

In case of malfunctions or a defect, remove the device from the electric power socket immediately. Repairs must only be carried out by the specialist trade. In case of incorrect repairs, no liability for any possible damage is accepted. Any technical change or improper use is prohibited because of the dangers associated with this!



## Guarantee/Warranty (USA)

- Damage/additional expenses, which are the result of malfunctions of the paging network, do not fall under the guarantee for the device.
- The guarantee is limited to the value of the remote switch.
- The duration of the guarantee is limited to 12 months as from the date of purchase.

## Technical Specifications

Model	SwitchPager DSE 408
Power supply	230 V AC
Max. switched current	10 A / 250 V AC
Transmission protocol	POCSAG CCIR RPC No. 1
Frequency	134 - 174 , 450 - 470 MHz
Sensitivity	7 $\mu$ V (512 bit/sec) 10 $\mu$ V (1'200 bit/sec)
Transmission speed	512 or 1'200 bit/sec
Dimensions	83 x 120 x 60 mm (W x H x D)

Should you have any technical questions  
or receiving problems,  
please directly contact ELBRO AG  
Tel. +41 1 854 73 00 / Fax +41 1 854 73 01